

# Eames Soft Pad Group

Charles & Ray Eames, 1969

**vitra.**



The design of the Soft Pad Group dates from the year 1969. In terms of both construction and shape, the Soft Pad Chairs are similar to the design of the Aluminium Group. However, their sewn-on cushions create a striking contrast to the slender aluminium profiles. The Soft Pad Chairs are softer and more voluptuous than the chairs in the Aluminium Group, but without losing the clean clarity of their common silhouette. The chairs adapt to the body of the sitter and provide extraordinary comfort.

Vitra has produced the Soft Pad Chairs in the same superior quality for decades. This outstanding quality allows us to offer a 30-year warranty\* on all the chairs in the Soft Pad Group.

The Soft Pad Group is a comprehensive family of chairs suited for use in the home and office, as well as in public spaces: the EA 205/207/208 models offer luxuriously soft seating for upscale meeting and conference settings, while EA 222/223 is an exceptionally comfortable lounge chair and ottoman combination. Mounted on a swivel base and available with backrests in various heights, the EA 217/219 chairs complete the product group. Thanks to this wide range of models, a variety of bases with a polished, chrome-plated or black finish, and a choice of fabric or leather upholstery in many different colours, customers can find the perfect Soft Pad Chair for every interior.

\*To benefit from the extended warranty, your product must belong to the Eames Soft Pad Group and have been purchased from a certified dealer after 1 September 2003. You have three months to register your product from the date of purchase.



## Charles & Ray Eames

Charles and Ray Eames are counted among the most important figures of twentieth-century design. Their work spans the fields of furniture design, filmmaking, photography and exhibition design. Vitra is the sole authorised manufacturer of Eames products for

Europe and the Middle East. When you own an Eames product made by Vitra, you know it is an original.

# Soft Pad Chairs EA 205/207/208 – Conference

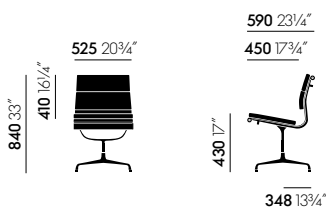
Charles & Ray Eames, 1969



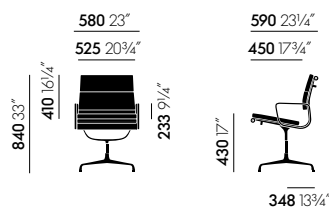
## Materials

- Backrest and seat:** chair with medium-high backrest. Three sewn-on cushions with polyurethane foam padding and fabric or leather covers. Side profiles and spreaders in die-cast aluminium, with a polished or chrome-plated finish or powder-coated in deep black.
- In the standard version, the reverse side of the seat back is covered in Plano fabric. At additional cost, the reverse side is optionally available in the corresponding leather.
- Armrests:** die-cast aluminium, with a polished or chrome-plated finish or powder-coated in deep black.
- Base:** four-star base in die-cast aluminium, with a polished or chrome-plated finish or powder-coated in deep black. Available in two different heights.

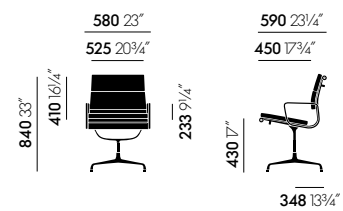
## DIMENSIONS (in accordance with EN 1335-1:2000)



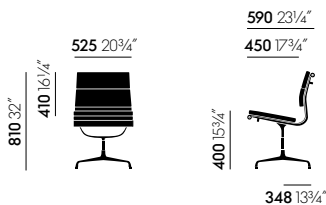
Soft Pad Chair EA 205 (classic height), non-swivel, without armrests



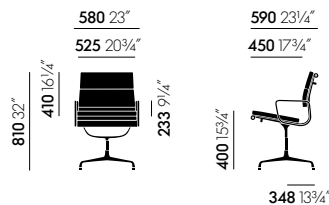
Soft Pad Chair EA 207 (classic height), non-swivel, with armrests



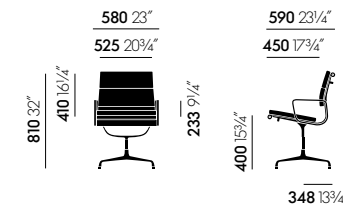
Soft Pad Chair EA 208 (classic height), swivel, with armrests



Soft Pad Chair EA 205 (new height), non-swivel, without armrests



Soft Pad Chair EA 207 (new height), non-swivel, with armrests



Soft Pad Chair EA 208 (new height), swivel, with armrests

# Soft Pad Chairs EA 217/219 – Work

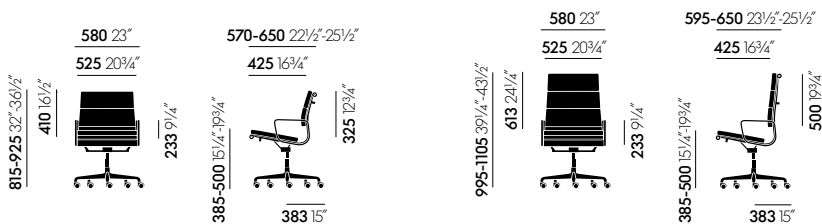
Charles & Ray Eames, 1969



## Materials

- Backrest and seat:** EA 217 with medium-high backrest, EA 219 with high backrest. Sewn-on cushions with polyurethane foam upholstery in fabric or leather. Side profiles and spreaders in die-cast aluminium, with a polished or chrome-plated finish or powder-coated in deep black.
- Seat mechanism:** adjustable backward tilt, lockable in the forward position. Continuous seat height adjustment with gas spring.
- Armrests:** die-cast aluminium, with a polished or chrome-plated finish or powder-coated in deep black.
- Base:** five-star base in die-cast aluminium, with a polished or chrome-plated finish or powder-coated in deep black. Equipped with hard castors for carpet or soft castors for hard floors. Castor covers in black for polished and black powder-coated base, with chrome-plated finish for chrome base.
- In the standard version, the reverse side of the seat back is covered in Plano fabric. At additional cost, the reverse side is optionally available in the corresponding leather.

## DIMENSIONS (in accordance with EN 1335-1:2000)



Soft Pad Chair EA 217, medium-high backrest, swivel, with armrests

Soft Pad Chair EA 219, high backrest, swivel, with armrests

# Soft Pad Chair EA 231

Charles & Ray Eames, 1969

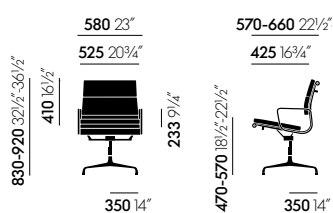
**vitra.**



## Materials

- **Backrest and seat:** sewn-on cushions with polyurethane foam padding and fabric or leather covers. Side profiles and spreaders in die-cast aluminium, with a polished or chrome-plated finish or powder-coated in deep black.
- **Seat mechanism:** adjustable backward tilt, lockable in the forward position. Continuous seat height adjustment with gas spring.
- **Armrests:** die-cast aluminium, with a polished or chrome-plated finish or powder-coated in deep black.
- **Base:** four-star base in die-cast aluminium, with a polished or chrome-plated finish or powder-coated in deep black. Fitted with plastic glides for carpet or felt glides for hard floors.

## DIMENSIONS (in accordance with EN 1335-1:2000)



Soft Pad Chair EA 231, medium-height  
backrest, swivel, with armrests

# Soft Pad Chair EA 222/223 – Lounge

Charles & Ray Eames, 1969



## Materials

### EA 222

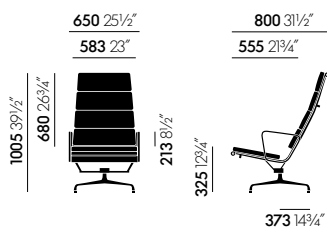
- **Backrest and seat:** chair with high backrest. Five sewn-on cushions with polyurethane foam upholstery in fabric or leather. Side profiles and spreaders in die-cast aluminium, with a polished or chrome-plated finish or powder-coated in deep black.
- **Seat mechanism:** adjustable backward tilt.
- In the standard version, the reverse side of the seat back is covered in Plano fabric. At additional cost, the reverse side is optionally available in the corresponding leather.

- **Armrests:** die-cast aluminium, with a polished or chrome-plated finish or powder-coated in deep black.
- **Base:** four-star base in die-cast aluminium, with a polished or chrome-plated finish or powder-coated in deep black.

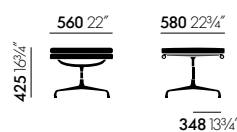
### EA 223

- **Seat:** non-swivel. Sewn-on cushion with polyurethane foam upholstery in fabric or leather. Side profiles and spreaders in die-cast aluminium, with a polished or chrome-plated finish or powder-coated in deep black.
- **Base:** four-star base in die-cast aluminium, with a polished or chrome-plated finish or powder-coated in deep black.

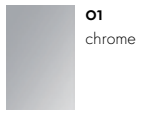
## DIMENSIONS (in accordance with EN 1335-1:2000)



Soft Pad Armchair EA 222, swivel, with armrests



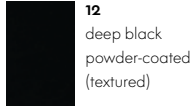
Soft Pad Chair EA 223, Stool, non-swivel



**01**  
chrome



**03**  
polished aluminium



**12**  
deep black  
powder-coated  
(textured)

**Base**



# Cosy 2 Home/Office, F80

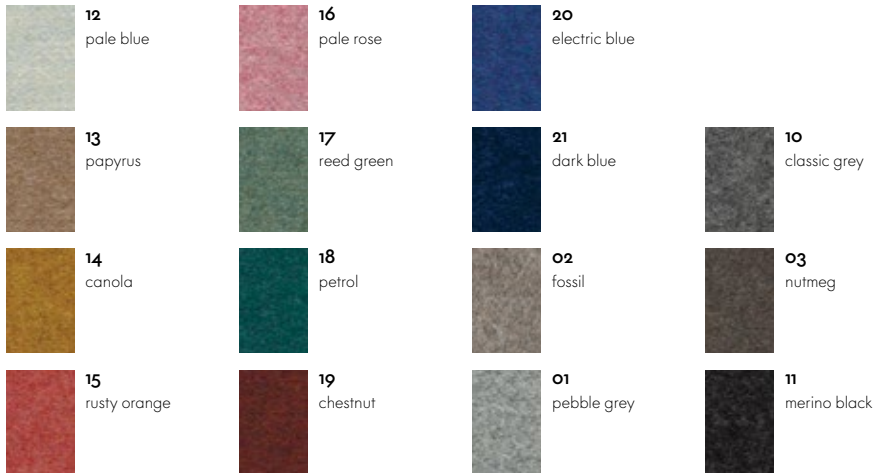
**vitra.**



Cosy 2 is a high-quality milled woollen cloth with a warm character. The lively melange yarn emphasises the fabric's natural colours – from delicate shades to vibrant hues – and gains added elegance with colour-coordinated stitching. The fabric offers thermal comfort and excellent durability, making it suited for upholstered furniture in office settings as well as residential applications.

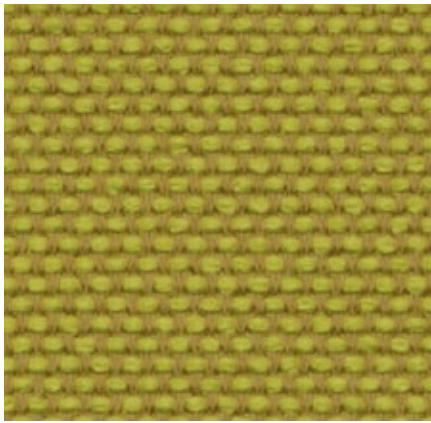
Cosy 2 is available in 15 colours.

Material	20% polyamide, 80% new wool
Weight	590 g/m <sup>2</sup> (17.4 oz/y <sup>2</sup> )
Width	154 cm +/- 2 cm (60")
Abrasion resistance	50,000 Martindale
Fastness to light	Type 6
Pilling	Grade 4-5
Fastness to rubbing	Grade 4-5 dry and wet



# Laser RE Home/Office, F40

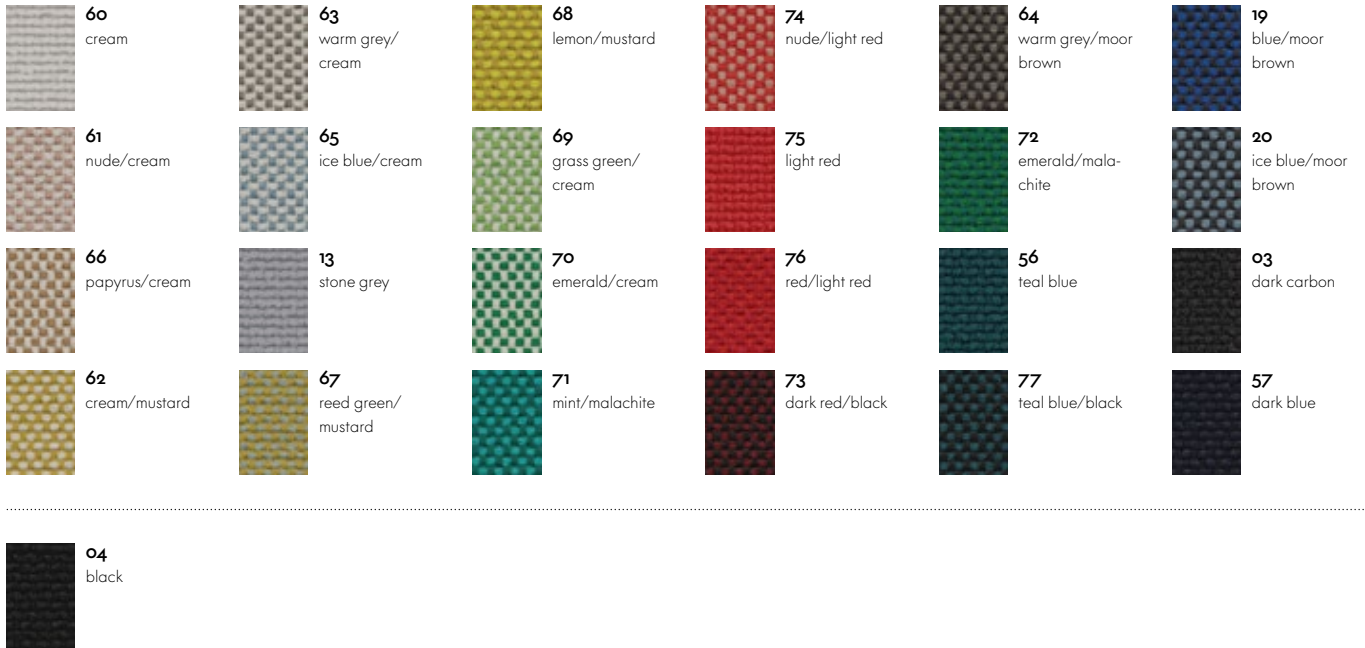
**vitra.**



The environmentally friendly fabric Laser RE is made from recycled polyester. It has a distinctive woven appearance, which is particularly accentuated by contrasting duotones in a varied palette of 25 colours. Practical and easy to care for, as well as durable and highly abrasion-resistant, Laser RE is also well suited for office environments.

Laser RE is available in 25 colours.

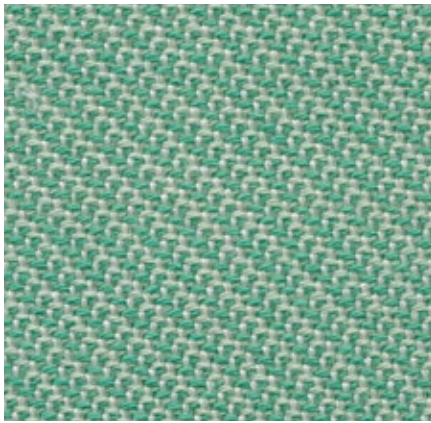
Material	100% recycled polyester
Weight	520 g/m <sup>2</sup>
Width	144 cm +/- 2 cm
Abrasion resistance	100,000 Martindale
Fastness to light	Type 6
Pilling	Grade 4-5
Fastness to rubbing	Grade 4-5 dry and wet





# Track Home/Office, F120

**vitra.**



Track is a medium-weight woollen fabric with a subtle pattern of fine diagonal stripes, which gives it a sporty, fresh appearance. Thanks to its high quality, the fabric is suited for office environments, but also adds a beautiful touch to home interiors.

Track is available in 25 colours.

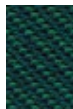
Material	10% polyamide, 90% new wool
Weight	480 g/m <sup>2</sup> (14.2 oz/y <sup>2</sup> )
Width	143 cm +/- 2 cm (56")
Abrasion resistance	100,000 Martindale
Fastness to light	Type 6
Pilling	Grade 4-5
Fastness to rubbing	Grade 4-5 dry and wet



**01**  
parchment/  
cream



**06**  
mint/cream



**21**  
teal blue/  
nero



**18**  
royal blue/  
chestnut



**10**  
yellow/cream



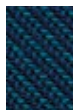
**08**  
pink/mustard



**02**  
light grey/cream



**03**  
ice blue/cream



**20**  
aqua/nero



**19**  
royal blue/  
nero



**11**  
pastel green/  
canola



**13**  
pink/coral



**05**  
soft mint/cream



**07**  
mid-grey/cream



**24**  
anthracite/  
mid-grey



**22**  
forest/black



**04**  
cognac/mustard



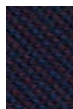
**14**  
dark magenta/  
chestnut



**09**  
lime/soft mint



**23**  
mid-grey/iron  
grey



**17**  
chestnut/ink  
blue



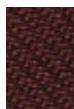
**25**  
nero



**12**  
yellow/coral



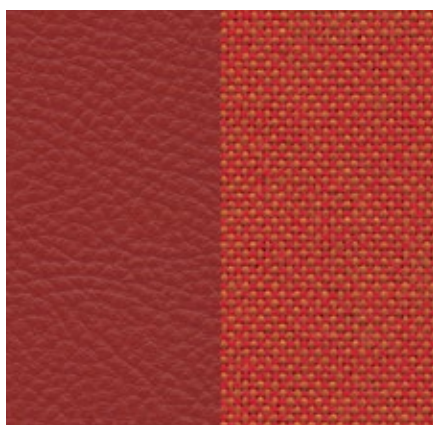
**15**  
brick/dark red



**16**  
dark red/nero

# Leather Home/Office, L20

**vitra.**



## Leather/back panel Plano

The standard grade leather used by Vitra is a robust cowhide leather, dyed-through, pigmented and embossed with an even grain pattern. Since it is hard-wearing and easy to maintain, it can also be used in office environments.

Leather is available in 16 colours.

Material

Robust cowhide with a distinctive, even grain

Fastness to light

Type 6

Thickness

1.1–1.3 mm

Fastness to rubbing

Grade 4 dry and wet



72/88  
snow/white



67/69  
asphalt/dark grey



66/66  
nero/nero



70/72  
red/poppy red



73/03  
clay/parchment/cream white



59/40  
jade/coconut/forest



68/54  
chocolate/brown



22/96  
red stone/red/cognac



64/05  
cement/cream white/sierra grey



71/80  
sand/coffee



69/54  
marron/brown



97/67  
cognac/cognac



21/19  
dim grey/sierra grey



61/69  
umbra grey/dark grey



87/54  
plum/brown



75/80  
camel/coffee

# Leather Premium F Home/Office, L50



## Leather Premium F (contrast seam)/back panel Plano

Leather Premium F is a relatively smooth cowhide leather with a flat grain and fine top sheen. It is dyed-through, lightly pigmented and processed with a tanning agent extracted from olive tree leaves (a waste product of the olive harvest).

Leather Premium F is available in 22 colours.

Material

Semi-aniline nappa leather with a very soft and supple feel, vegetable tanned

Fastness to light

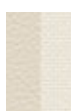
Type 5

Thickness

1.1–1.3 mm

Fastness to rubbing

Grade 4 dry and wet



72/88  
snow/white



59/40  
jade/coconut/forest



66/66  
nero/nero



69/54  
marron/brown



74/80  
olive/coffee



64/05  
cement/cream white/sierra grey



58/40  
khaki/coconut/forest



77/54  
brown/brown



93/11  
brandy/marron/cognac



75/80  
camel/coffee



65/19  
granite/sierra grey



61/69  
umbra grey/dark grey



68/54  
chocolate/brown



22/96  
red stone/red/cognac



62/80  
ochre/coffee



71/80  
sand/coffee



60/69  
smoke blue/dark grey



67/69  
asphalt/dark grey



87/54  
plum/brown



97/67  
cognac/cognac



63/80  
cashew/coffee



73/03  
clay/parchment/cream white

